

Gulf of Mexico

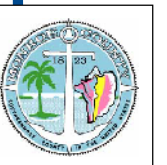
Key Haven

Stock Island

City of Key West

Monroe County, Florida Commissioner Districts

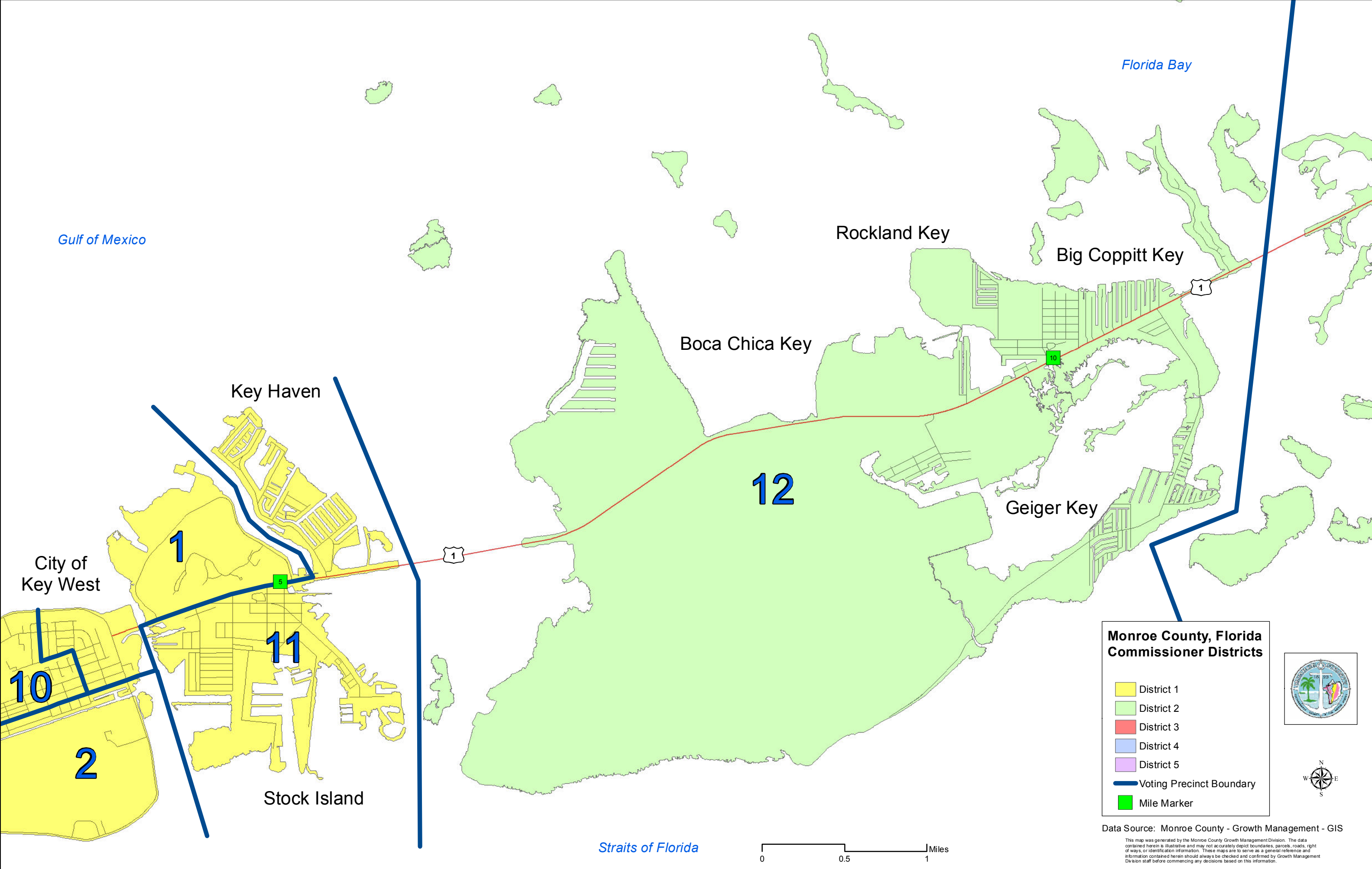
- District 1
- District 2
- District 3
- District 4
- District 5
- Voting Precinct Boundary
- Mile Marker

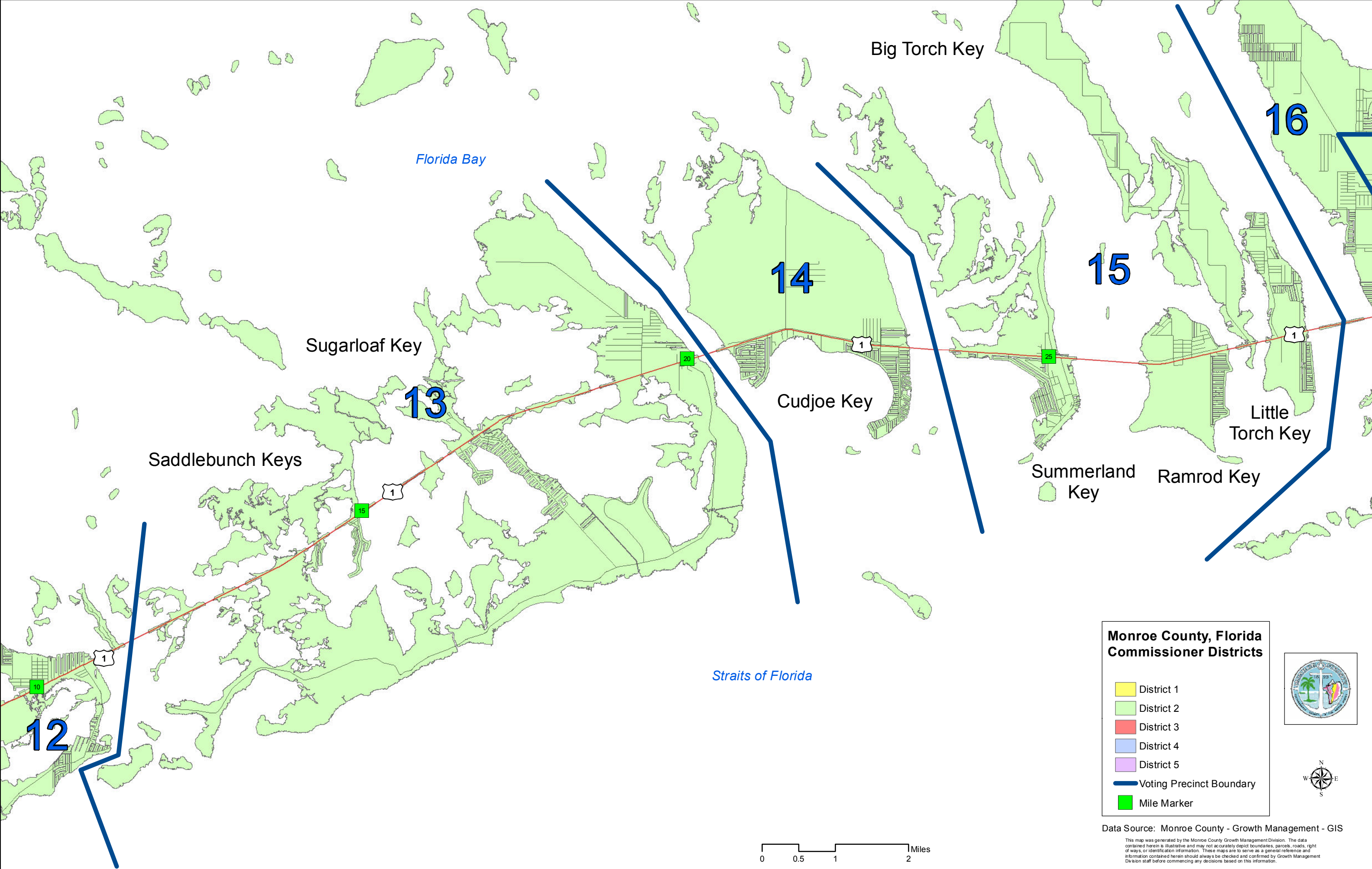


Data Source: Monroe County - Growth Management - GIS

This map was generated by the Monroe County Growth Management Division. The data contained herein is illustrative and may not accurately depict boundaries, parcels, roads, right of ways, or identification information. These maps are to serve as a general reference and information contained herein should always be checked and confirmed by Growth Management Division staff before commencing any decisions based on this information.

0 0.5 1 Miles





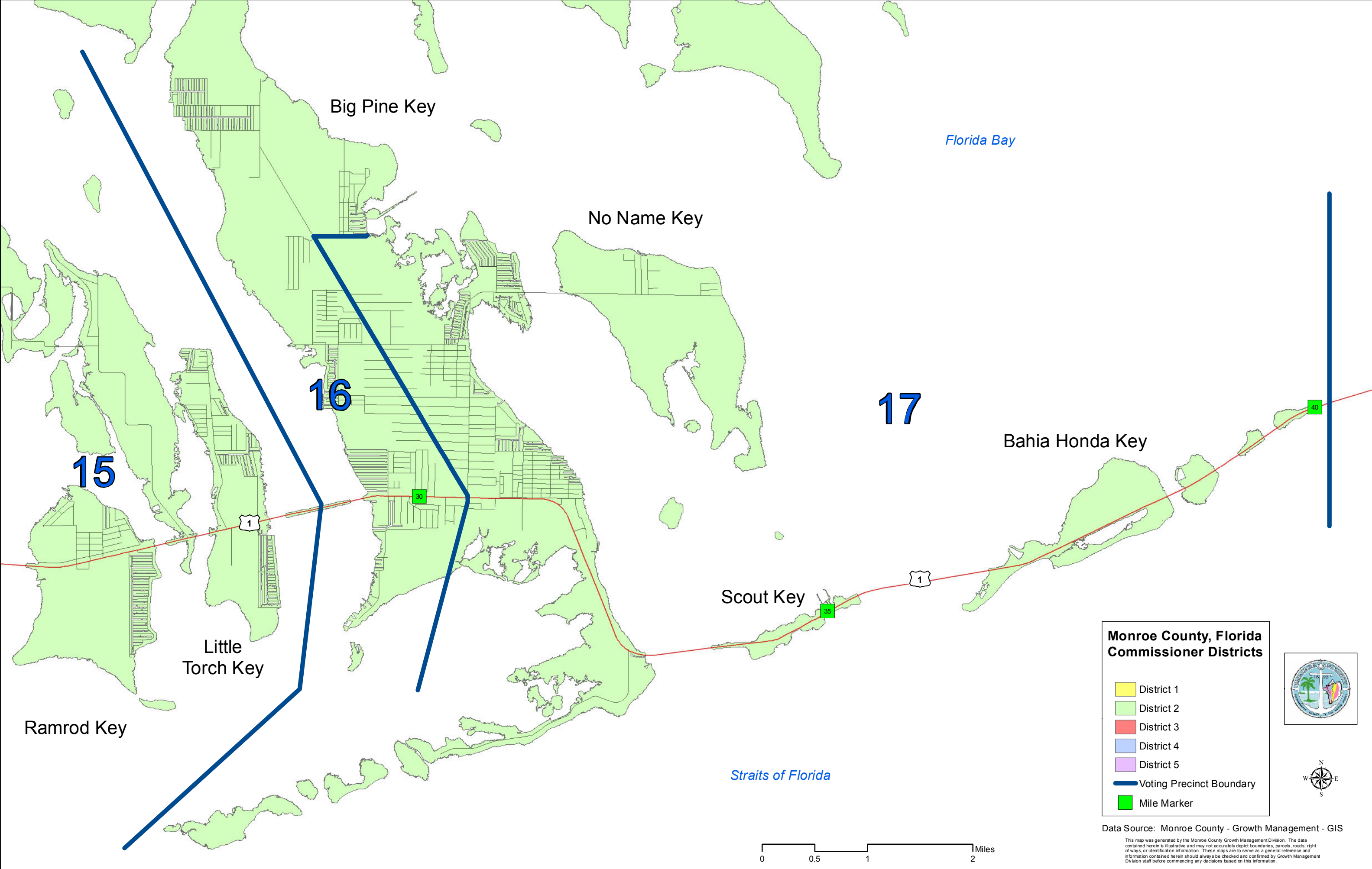
**Monroe County, Florida
Commissioner Districts**

- District 1
- District 2
- District 3
- District 4
- District 5
- Voting Precinct Boundary
- Mile Marker



Data Source: Monroe County - Growth Management - GIS

This map was generated by the Monroe County Growth Management Division. The data contained herein is illustrative and may not accurately depict boundaries, parcels, roads, right of ways, or identification information. These maps are to serve as a general reference and information contained herein should always be checked and confirmed by Growth Management Division staff before commencing any decisions based on this information.



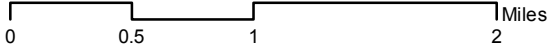
**Monroe County, Florida
Commissioner Districts**

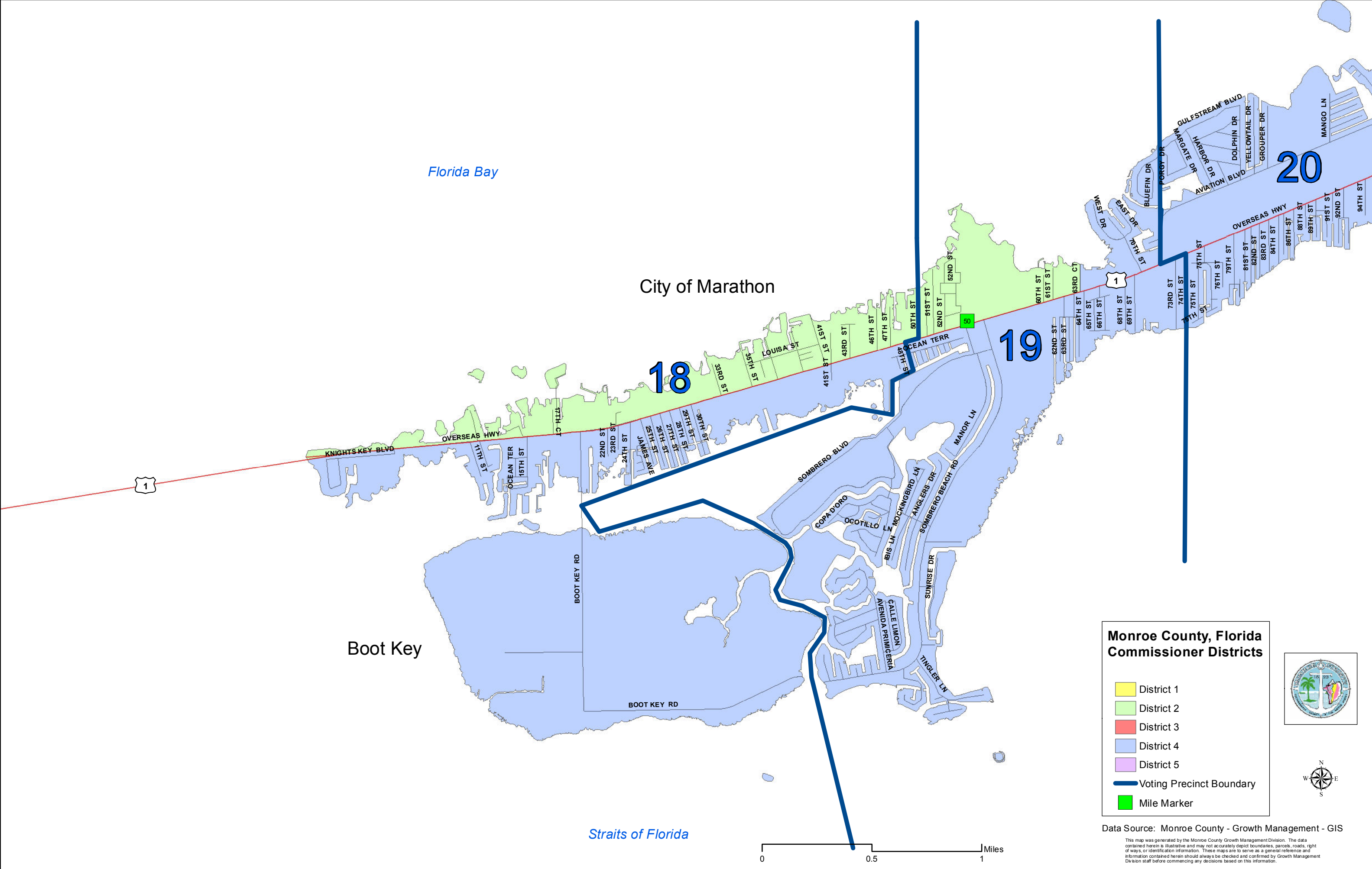
- District 1
- District 2
- District 3
- District 4
- District 5
- Voting Precinct Boundary
- Mile Marker



Data Source: Monroe County - Growth Management - GIS

This map was generated by the Monroe County Growth Management Division. The data contained herein is illustrative and may not accurately depict boundaries, parcels, roads, right of ways, or identification information. These maps are to serve as a general reference and information contained herein should always be checked and confirmed by Growth Management Division staff before commencing any decisions based on this information.





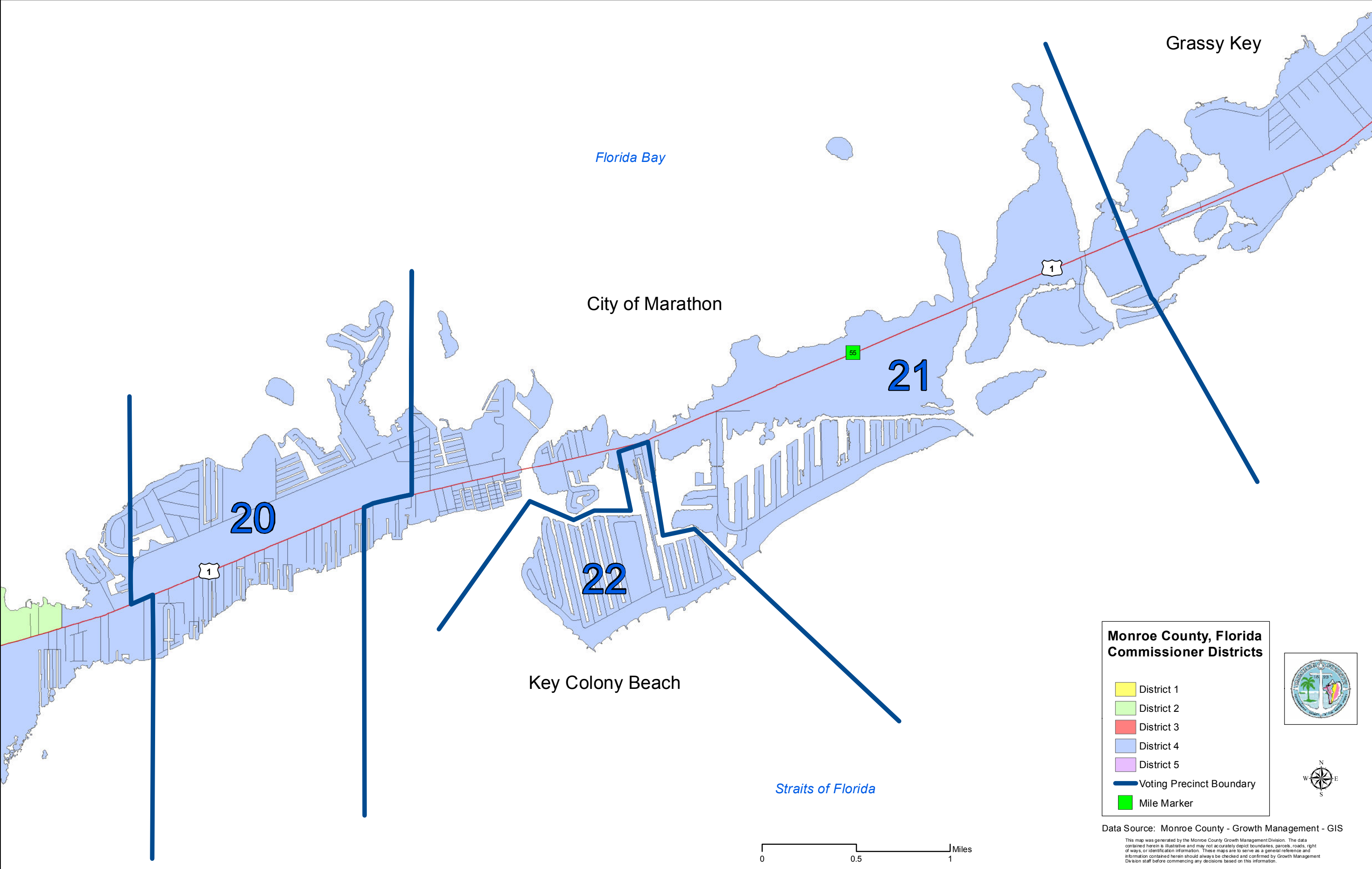
**Monroe County, Florida
Commissioner Districts**

- District 1
- District 2
- District 3
- District 4
- District 5
- Voting Precinct Boundary
- Mile Marker



Data Source: Monroe County - Growth Management - GIS

This map was generated by the Monroe County Growth Management Division. The data contained herein is illustrative and may not accurately depict boundaries, parcels, roads, right of ways, or identification information. These maps are to serve as a general reference and information contained herein should always be checked and confirmed by Growth Management Division staff before commencing any decisions based on this information.



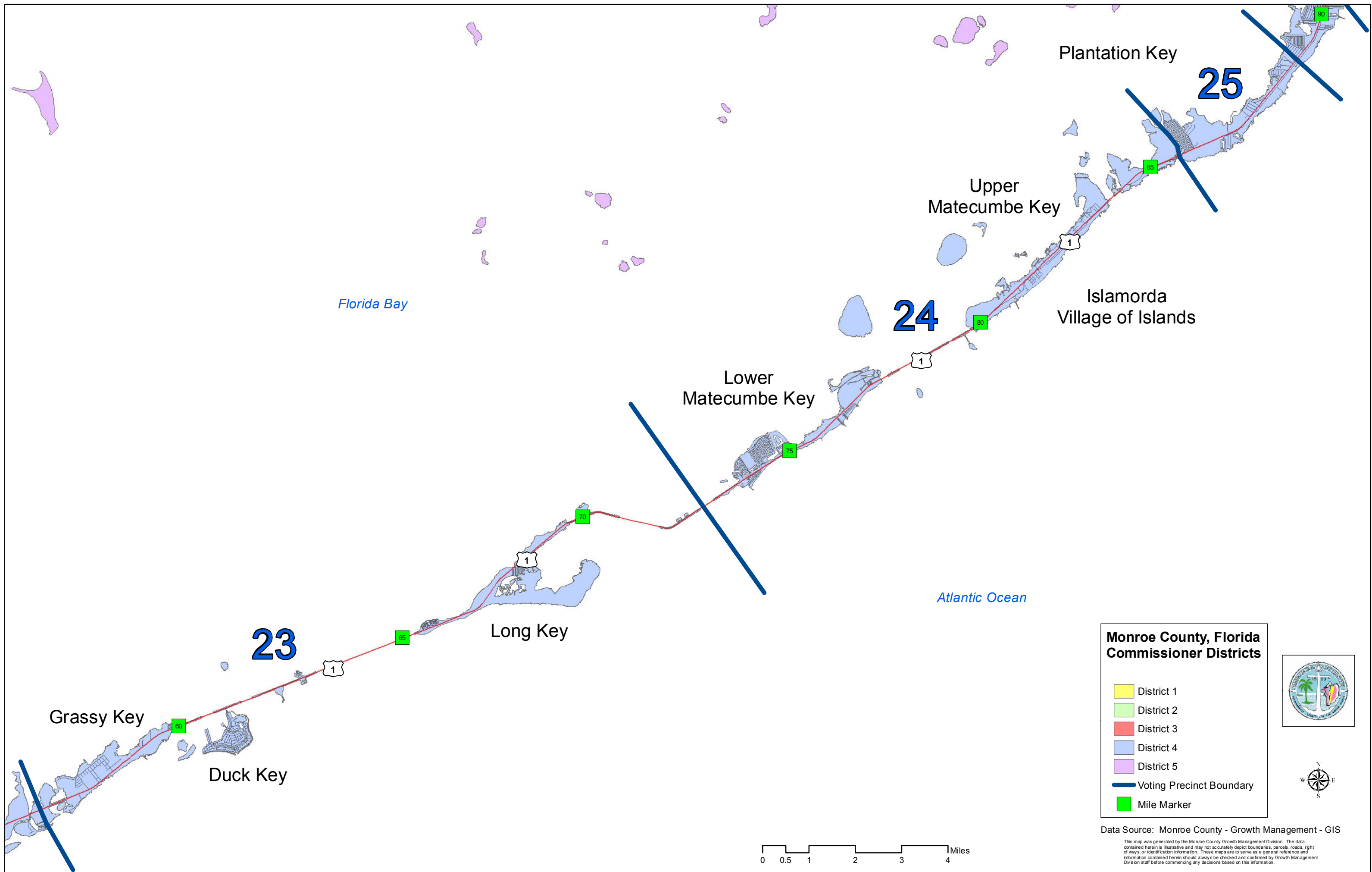
**Monroe County, Florida
Commissioner Districts**

- District 1
- District 2
- District 3
- District 4
- District 5
- Voting Precinct Boundary
- Mile Marker



Data Source: Monroe County - Growth Management - GIS

This map was generated by the Monroe County Growth Management Division. The data contained herein is illustrative and may not accurately depict boundaries, parcels, roads, right of ways, or identification information. These maps are to serve as a general reference and information contained herein should always be checked and confirmed by Growth Management Division staff before commencing any decisions based on this information.



**Monroe County, Florida
Commissioner Districts**

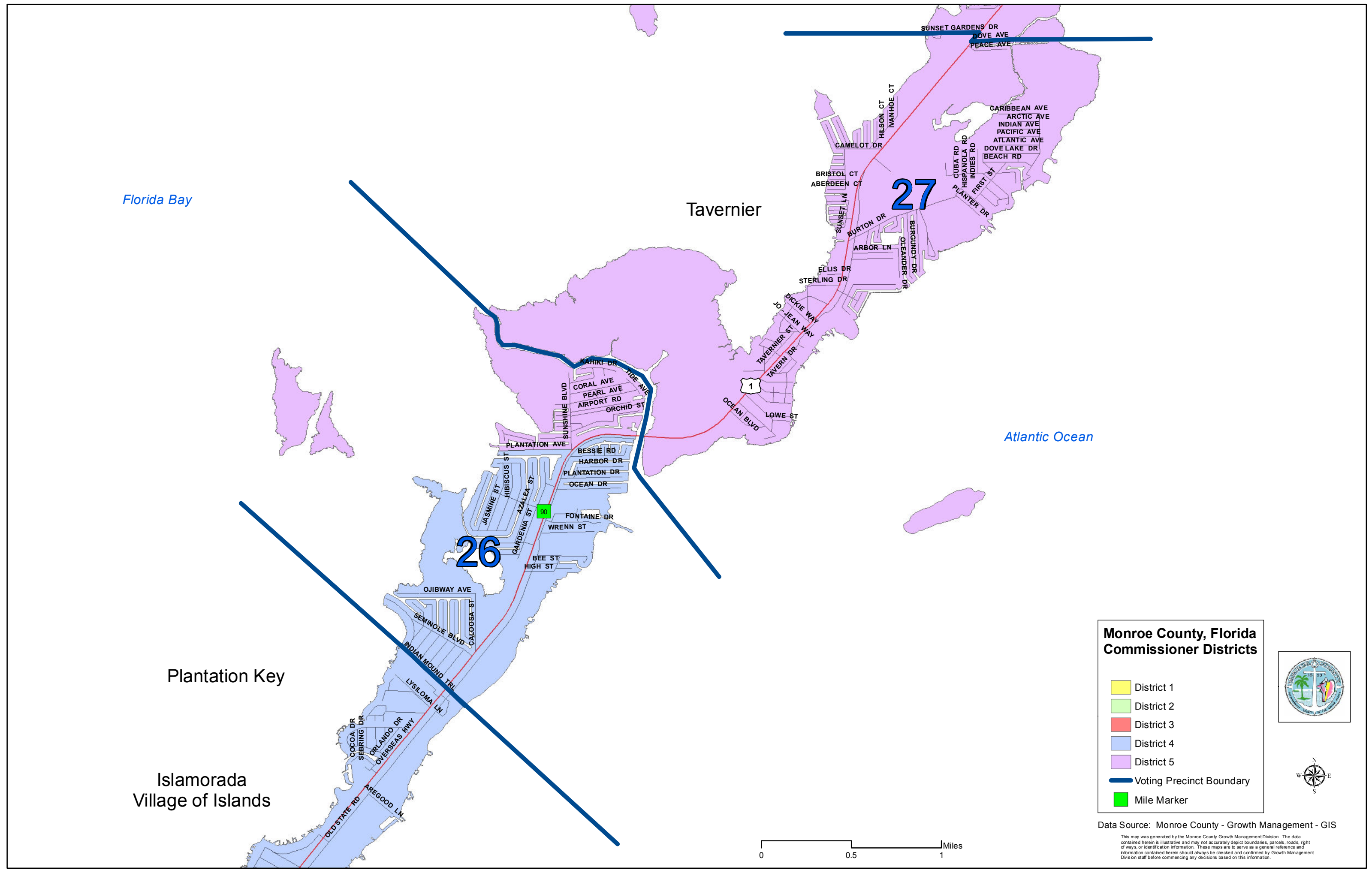
- District 1
- District 2
- District 3
- District 4
- District 5
- Voting Precinct Boundary
- Mile Marker



Data Source: Monroe County - Growth Management - GIS

This map was generated by the Monroe County Growth Management Division. The data contained herein is illustrative and may not accurately depict boundaries, parcels, roads, right of ways, or identification information. These maps are to serve as a general reference and information contained herein should always be checked and confirmed by Growth Management Division staff before commencing any decisions based on this information.

0 0.5 1 2 3 4 Miles



**Monroe County, Florida
Commissioner Districts**

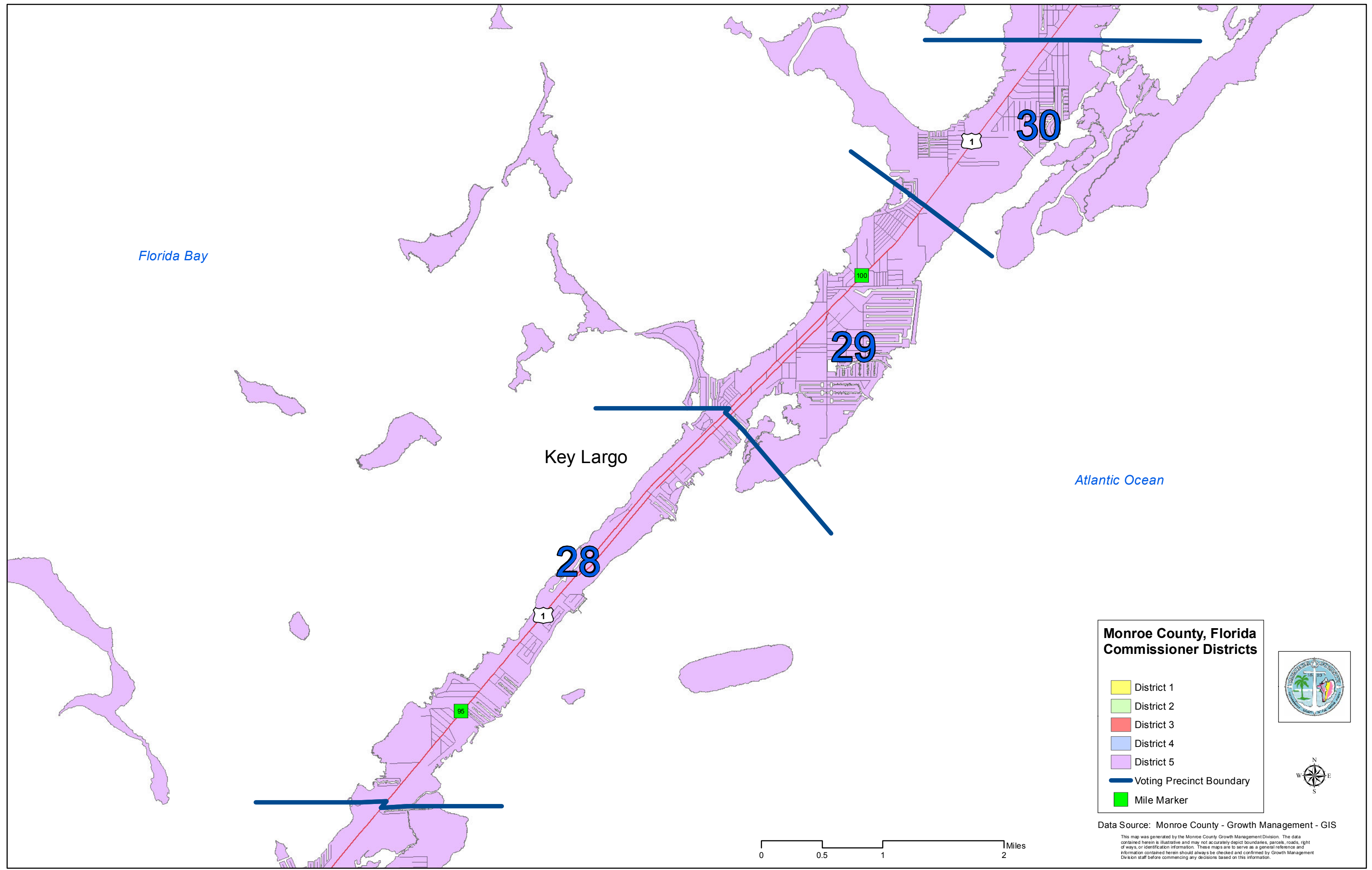
- District 1
- District 2
- District 3
- District 4
- District 5
- Voting Precinct Boundary
- Mile Marker



Data Source: Monroe County - Growth Management - GIS

This map was generated by the Monroe County Growth Management Division. The data contained herein is illustrative and may not accurately depict boundaries, parcels, roads, right of ways, or identification information. These maps are to serve as a general reference and information contained herein should always be checked and confirmed by Growth Management Division staff before commencing any decisions based on this information.

0 0.5 1 Miles



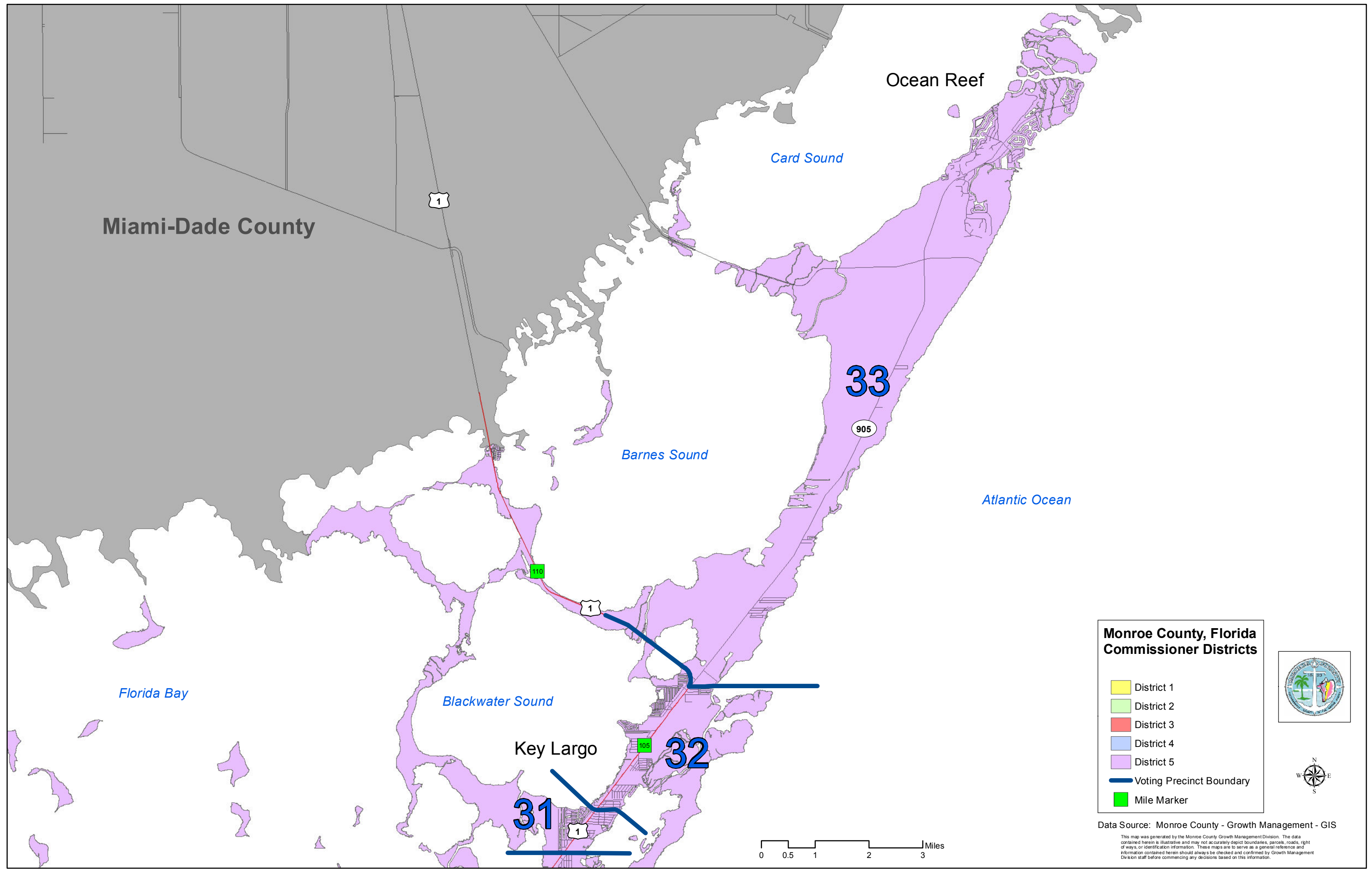
**Monroe County, Florida
Commissioner Districts**

- District 1
- District 2
- District 3
- District 4
- District 5
- Voting Precinct Boundary
- Mile Marker



Data Source: Monroe County - Growth Management - GIS

This map was generated by the Monroe County Growth Management Division. The data contained herein is illustrative and may not accurately depict boundaries, parcels, roads, right of ways, or identification information. These maps are to serve as a general reference and information contained herein should always be checked and confirmed by Growth Management Division staff before commencing any decisions based on this information.



**Monroe County, Florida
Commissioner Districts**

- District 1
- District 2
- District 3
- District 4
- District 5
- Voting Precinct Boundary
- Mile Marker



Data Source: Monroe County - Growth Management - GIS

This map was generated by the Monroe County Growth Management Division. The data contained herein is illustrative and may not accurately depict boundaries, parcels, roads, right of ways, or identification information. These maps are to serve as a general reference and information contained herein should always be checked and confirmed by Growth Management Division staff before commencing any decisions based on this information.